



Community Pharmacy Primary Care Clinics

Effective February 1, 2023

QUICK TIPS

On February 1, 2023, the Community Pharmacy Primary Care Clinic (CPPCC) program was launched. This program expands the number of publicly funded services provided by pharmacies that were previously only funded in other healthcare settings. To prepare your pharmacy for this new program, we compiled the following quick tips about CPPCC services as it relates to PharmaClik Rx.

How do I locate the CPPCC Drug Folders?

All CPPCC service PINs have been entered in PharmaClik Rx as individual Drug Folders. Each Drug Folder has a Trade Name and Generic Name beginning with **"NS PPCC."** When performing a Drug search, enter "NS PPCC" in the Trade and/or Generic Name fields to filter for a list of CPPCC services.

DIN/PIN	Generic Name	Trade Name	CCDD	Strength	Mfr	For
	NS PPCC					

How do I generate a professional services billings report showing the quantity and revenue received from non-dispensing services?

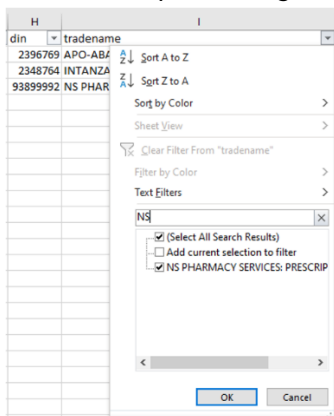
The [Drug Movement report](#) can be generated and saved as a CSV file. From a spreadsheet application, the report can be filtered for professional services.

To generate the Drug Movement report:

1. Select **More > Reports > Drug Movement.**
2. Enter a **Start Date** and **End Date.**
3. Select **Preview.**
4. In the Preview window, select **Save As.**
5. In the Save As window, select a location to save the report.
6. In the **File name** field, enter a name for the report.
7. From the **Save as type** dropdown, select CSV with headers.



8. Select **Save**.
9. Open the report in Excel or another spreadsheet application.
10. **Filter** the report using a text filter = "NS" in the **tradename** column.



11. Copy the data from the filtered spreadsheet onto a new sheet.
12. On the new spreadsheet, highlight any unnecessary columns and delete them.
13. Save and print the new spreadsheet, if needed.
14. Delete the original spreadsheet with the excess data.

How do I get a list of patients with specific medical conditions?

If medical conditions are added in the Patient Folder Clinical tab, the [Patient List report](#) can be generated to obtain a list of patients with a specific medical condition. For information on adding a medical condition to the Patient Folder, click [here](#).

To generate the Patient List report:

1. Select **More > Reports > Patient List report**.
2. Enter a **Start Date** and **End Date**. Patients who had prescriptions filled within the date range appear on the report.
3. In the **Condition** field, enter the medical condition.
 - To search for a medical condition:
 - a) Select the **Search** button while your cursor is in the Condition field. The **Medical Condition Search** window opens.
 - b) In the **Description** field, enter the medical condition.
 - c) Select **Search**.
 - d) Select the matching condition in the results section.
 - e) Select **OK**.
4. Complete the other Criteria fields if applicable.
5. *Optional:* Select the **Sort Options** tab to sort the report by the following:
 - Patient Name
 - Last Activity
 - Rx Volume
 - Rx \$ Volume
6. Select **Preview** or **Print**.



Patient List

PTS Pharmacy Date: Mar 01, 2023
 2300 Meadowvale Blvd
 Halifax, Nova Scotia B1B 2B2 Report Period: Feb 01, 2023 to Feb 28, 2023

Condition: Condition-HYPERTENSION Sorted By: Patient Name

Patient		Third Party			Rx			
Address Phone #	PHN Birth Date	Plan Carrier ID Cardholder	Group ID	Client ID Relationship	Code	Last Rx Date	# Rx's	\$ Volume
Douglas, Jane 1 Polar Lane Halifax, Nova Scotia B2B 3B3 (800) 387-6093	Jan 01, 1960	CA				Feb 27, 2023	1	\$94.55 \$0.00 TP \$94.55 CA
Totals:							1	\$94.55

What report can I run to see the revenue obtained from the CPPCC program?

Each CPPCC Drug Folder has been assigned the PPCC Custom Class for reporting purposes. The [Drug Movement report](#) can be generated for the PPCC Custom Class to review the revenue obtained from each service. The [Gross Profit by Prescription report](#) can also be generated to obtain a more detailed prescription breakdown.

To generate the Drug Movement or Gross Profit by Prescription report:

1. Select **More > Reports > Drug Movement** or **Gross Profit by Prescription**.
2. Enter a **Start Date** and **End Date**. DINs that were dispensed or prescriptions that were filled within the date range appear on the report.
3. In the **Custom Class** field, enter PPCC.
4. Complete the remaining Criteria fields if needed.
5. *Optional:* Select the **Sort Options** tab to sort the report.
6. Select **Preview** or **Print**.

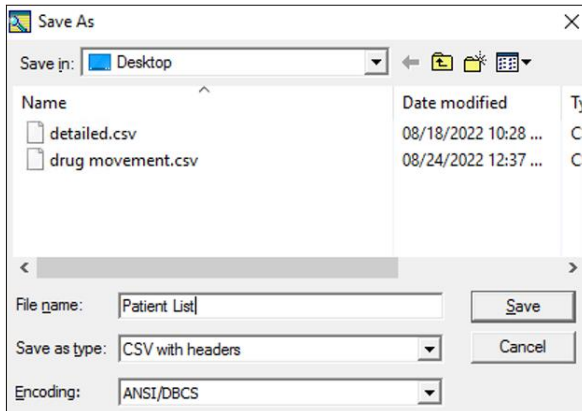
What report can I run to see the total number of patients who received a service from the CPPCC program?

The [Patient List report](#) can be run and saved as a CSV file. From a spreadsheet application, the total number of patients on the report can be obtained.

To generate the Patient List report:

1. Select **More > Reports > Patient List report**.
2. Enter a **Start Date** and **End Date**.
3. In the **Custom Class** field, enter PPCC.
4. *Optional:* Enter the DIN for the service in the **Drug** field if you want to generate the report for a specific service.
5. Select **Preview**.
6. In the Preview window, select **Save As**.
7. In the Save As window, select a location to save the report.
8. In the **File name** field, enter a name for the report.
9. From the **Save as type** dropdown, select CSV with headers.





10. Select **Save**.
11. Open the report in Excel or another spreadsheet application. The total number of rows minus 1 is the total number of patients on the report.

